



**59 Cromwell Close, Newtown, Berkeley, GL13
9GA**

£1,500 per month
Unfurnished

59 Cromwell Close, Newtown, Berkeley, GL13 9GA

A four bedroom detached family home located in the popular development in Newtown, Berkeley.

Located just 2.4 miles from the centre of Berkeley & 2.5 miles from the popular attraction of Berkeley Castle.

To the ground floor you'll find the open plan kitchen/diner, cloakroom and lounge. The kitchen offers a variety of wall and base units and includes,

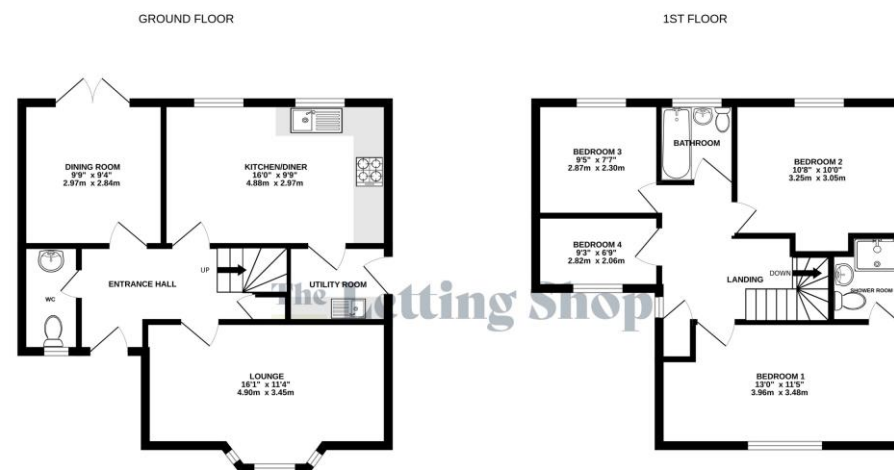
Gas Hob
Electric Oven

Upstairs to the first floor and you'll find four bedrooms. The main bedroom includes an ensuite shower room with the remaining bedrooms providing neutral decor and flooring.

Outside space is offered via the front & rear gardens, with the garage included and parking offered via the driveway.

Council Tax Band : E
Holding Deposit : £346
Security Deposit : £1,730

- Unfurnished
- Four Bedrooms
- Two Reception Rooms
- Kitchen/Diner
- Berkeley Location
- Neutral Decor
- Gas Central Heating
- Driveway Parking
- Available November 2025
- Garage



Whilst every attempt has been made to ensure the accuracy of the floorplan contained here, measurements of doors, windows, rooms and any other items are approximate and no responsibility is taken for any error, omission or misstatement. This plan is for illustrative purposes only and should be used as such by any prospective purchaser. The services, systems and appliances shown have not been tested and no guarantee as to their operability or efficiency can be given.
Made with Metropix 02/25





Score	Energy rating	Current	Potential
92+	A		
81-91	B		
69-80	C	71 C	80 C
55-68	D		
39-54	E		
21-38	F		
1-20	G		

The Letting Shop - Bristol

385 Two Mile Hill Road
Kingswood
Bristol
BS15 1AD

T: 0117 9610011

E: hello@lettingshop.com

www.lettingshop.com

United Lettings Limited - Company registration: 03714318 (England and Wales)
Registered Office: 385 Two Mile Hill Road, Kingswood, Bristol, BS15 1AD.

Disclaimer

Every attempt has been made to ensure accuracy, however these property particulars are approximate and for illustrative purposes only. They have been prepared in good faith and they are not intended to constitute part of an offer of contract. We have not carried out a structural survey and the services, appliances and specific fittings have not been tested. All photographs, measurements, floor plans and distances referred to are given as a guide only and should not be relied upon for the purchase of any fixture or fittings. Lease details, service charges and ground rent (where applicable) are given as a guide only and should be checked prior to agreeing a sale.