



31 Somerdale Avenue, Knowle, Bristol, BS4 2XN

£1,500 per month

Unfurnished

31 Somerdale Avenue, Knowle, Bristol, BS4 2XN

There is a short form we ask prospective applicants to fill out prior to booking a viewing.

Located in the popular location of Knowle, this three-bedroom home features open plan living, front and rear gardens with parking.

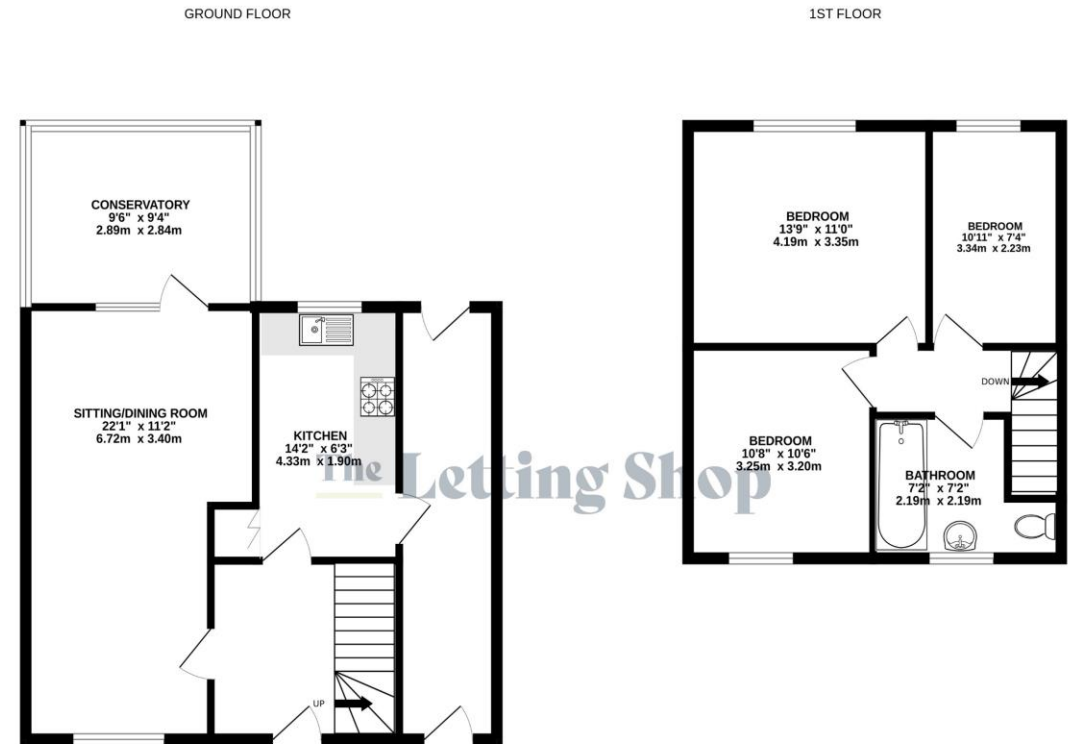
To the ground floor the home provides an open plan living/dining room, with a conservatory through double doors. A separate kitchen is off of the hallway and provides a variety of wall and base units with a freestanding gas cooker.

Head upstairs to the first floor to find three bedrooms, two of which are double rooms and the main family bathroom.

This home is located 3.2 miles from Bristol City Centre, 1.9 miles to Temple Meads Train Station and is offered unfurnished.

Council Tax Band : B
Holding Deposit - £346
Security Deposit - £1,730

- Unfurnished
- Three bedrooms
- Rear Garden
- Driveway Parking
- Knowle Park location
- Offered Unfurnished
- Available Now
- Gas Central Heating



THE LETTING SHOP

Whilst every attempt has been made to ensure the accuracy of the floorplan contained here, measurements of doors, windows, rooms and any other items are approximate and no responsibility is taken for any error, omission or mis-statement. This plan is for illustrative purposes only and should be used as such by any prospective purchaser. The services, systems and appliances shown have not been tested and no guarantee as to their operability or efficiency can be given.
Made with Metropix ©2025





Energy Efficiency Rating		
	Current	Potential
Very energy efficient - lower running costs		
(92+) A		
(81-91) B		
(69-80) C		
(55-68) D		
(39-54) E		
(21-38) F		
(1-20) G		
Not energy efficient - higher running costs		
England, Scotland & Wales	EU Directive 2002/91/EC	

The Letting Shop - Bristol

385 Two Mile Hill Road
Kingswood
Bristol
BS15 1AD

T: 0117 9610011

E: hello@lettingshop.com

www.lettingshop.com

United Lettings Limited - Company registration: 03714318 (England and Wales)
Registered Office: 385 Two Mile Hill Road, Kingswood, Bristol, BS15 1AD.

Disclaimer

Every attempt has been made to ensure accuracy, however these property particulars are approximate and for illustrative purposes only. They have been prepared in good faith and they are not intended to constitute part of an offer of contract. We have not carried out a structural survey and the services, appliances and specific fittings have not been tested. All photographs, measurements, floor plans and distances referred to are given as a guide only and should not be relied upon for the purchase of any fixture or fittings. Lease details, service charges and ground rent (where applicable) are given as a guide only and should be checked prior to agreeing a sale.